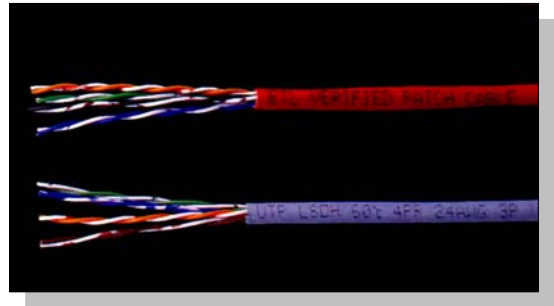


## CAT 6 PATCH CABLE

EMC Lan cable for low loss extended frequency data systems that operate up to 250 MHz The cables test exceed Cat.6 requirements by 6dB or more and provided excellent high speed transmission up to at least Gigabit Ethernet and has demonstrated support of 16 Mbps Token Ring and 1.2/2.4GMbps ATM Depending on the application and Test to 600MHz



### Product Description

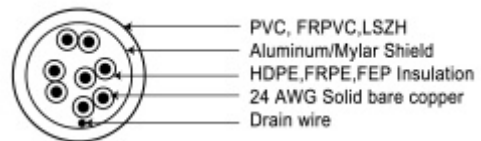
- Conductor: 24AWG Bare Stranded Copper
- Insulation : HDPE,FRPE,FEP

### Applications

- Telecommunications. Closet Connecting HUB equipments to patch panel
- HUB equipments to patch panel
- Work area outlet to pc terminals workstations, data equipment

### Industry Standards

- UL/CSA Listed Plenum : CMP Flame FT-6  
Non-Plenum : CM or CMR Flame rated FT-4
- UL and ETL Verified to ANSI/EIA/TIA 568-B.2 Category 6 compliant according to ISO/IEC 11801 ClassE, CENELEC EN 50173 Specifications CSA FCC Part 68.
- Meet the most stringent EMC standard EN 55022/Class B
- Flame-retardant/PVC & CMX according to IEC 332-1
- Flame-retardant/LSZH according to IEC 332-3
- EC Verified
- NEMA WC 63.1



### Electrical and Transmission Characteristics

- Impedance : 100 ohm ±15 ohm
- Max. Dc Resistance : 6.6 ohms/100m
- Min. Dc Insulation Resistance : 150 M ohm/100m
- Max. Dc Resistance : Unbal : 3%
- Mutual Capacitance Max : 5.6nF/100m 1 KHz
- Max Capacitance Unbal (pair to ground) : 3400 PF/km
- Normal Velocity of propagation (NVP)=Plenum FEP insulated 69%  
Non-Plenum Insulated 66%
- Delay Skew : 30 ns/ 100M
- Max. Propagation Delay : 536 ns/ 100M
- Operating Temperature Range : CMX : - 20°C to + 75°C  
LSZH : - 20°C to + 90°C

### Plug Electrical

- Application-150 VAC max. at 1.5A@ 25°C, derated to .2A @ 70°C insulation resistance 500 Megaohms.
- Mechanical : Cable-to-Plug Tensile Strength-30 lbs (133.5N)
- Temp. Rating : -40°C to +75°C
- Dielectria Withstanding Voltage 1000 Volts AC Durability -750 mating. cycles.
- Mateial and Finish : Housing – Polycarbonate, UL 94V-0 Flammability rating.
- Terminal -.014(.36)thick,
- Phosphor bronze ; underplated with100u in Nickel, and plated with 50u in gold in contact region and gold flash on remainder of terminal. terminal.

Part Numbers	Description
660408-X	UTP Cat.6 4Pr Non-Plenum
660458-X	UTP Cat.6 4Pr LSZH
660408-X	UTP Patch Cord Cat.6 4Pr Non-Plenum
660458-X	UTP Patch Cord Cat.6 4Pr LSZH

Color Cord X : R=Red B=Black W=White Y=Yellow  
U=Blue C=Gray G=Green O=Orange

### Transmission Characteristics

Frequency (MHz)	ATTENUATION (MAX.dB/100M)	NEXT	PSNEST	ELFEXT	PSELFEXT	RL	ACR	PSACR
1	1.8	84.3	82.3	67.8	64.8	20	82.5	80.5
4	3.6	75.3	73.3	55.7	52.7	23	71.7	69.7
8	5.1	71.8	68.8	49.7	46.7	24.5	66.7	64.7
10	5.8	69.3	67.3	47.8	44.8	25	63.5	61.5
16	7.3	66.3	64.3	43.7	40.7	25	59.0	57.0
20	8.2	64.8	62.8	41.7	38.7	25	56.6	54.6
25	9.2	63.3	61.3	39.8	36.8	24.3	54.1	52.1
31.25	10.4	61.9	59.9	37.9	34.9	23.6	51.5	49.5
62.5	15.0	57.4	56.4	31.8	28.8	21.5	42.1	40.4
100	19.3	54.3	52.3	27.8	24.8	20.1	35.0	33.0
155	24.8	51.7	49.7	23.9	20.9	18.8	26.9	24.9
200	28.3	49.8	47.8	21.7	18.7	18	21.5	19.5
250	32.0	48.3	46.3	19.8	16.8	17.3	16.2	14.2
300	35.6	47.2	45.2	18.2	15.2	16.8	11.6	9.6
350	38.9	46.2	44.2	16.9	13.9	16.3	7.3	5.3
400	42.0	45.3	43.3	15.7	12.7	15.5	3.3	1.3
450	45.0	44.5	42.5	14.7	11.7	15.5	-	-
500	47.9	43.8	41.8	13.8	10.8	15.2	-	-
550	50.6	43.2	41.2	12.9	9.9	14.9	-	-
600	53.5	41	39.0	11.8	8.8	14.7	-	-