

VisiPatch™ System

The VisiPatch System uses state-of-the-art IDC technology for optimum patch cord organization and management. The system provides superior GigaSPEED XL performance which is a clear advantage in data center applications. The unique “reverse direction” design provides a neat, cordless appearance that dramatically improves patch cord management and “avoids the clutter” that is inherent with other patch cord systems. The modular approach in the design maximizes the overall flexibility of the system. The system is lightweight, stackable and the components snap together for ease of installation.

Features and Benefits:

- Proven SYSTIMAX SCS performance
- Supports GigaSPEED XL channels
- 4-pair Patch Cord certified GigaSPEED XL component
- Fast, easy installation with low operating costs
- Innovative reverse patch cord design
- Neat, cordless appearance
 - Seven 4-pair cables per row
 - Up to 252 4-pair cables per vertical
- Unique plastic construction
- Snap-together components
- 28-port (112-pair) and 84-port (336-pair) stackable field terminated kits
- Superior patch cord routing and management
- Higher useable density

Back Panel The back panel is the backbone of the VisiPatch System. Using space-age plastic structural foam technology, this patented wall mounting hardware consists of two identical “L”-shaped halves that snap together to form a strong “U”-shaped panel. The lightweight panel can be easily mounted to support multiple mounting options. The back panel holds 4 or 12 wiring blocks to conform to any size installation.

Wiring Block The wiring block snaps into the back panel and accepts up to seven 4-pair cables (28 conductor pairs). It also accepts 25-pair count cables using 5-pair connecting blocks (25 conductor pairs). The wiring block entrance slot and grooves provide versatile cable management. This support feed system allows up to seven 4-pair cables for each wiring block.

Designation Strip/Cover Plate The cover plate snaps directly on to the wiring block and provides protection for the terminated cables. The two piece, clear plastic design provides easy access to the cables and enables visual verification of cable termination quality without moving any components. The pivoted plastic label holder also serves as a designation strip for circuit identification, and facilitates the latching of the patch cord.

Physical Specifications:

Height: 110UB1-112FT: 7.2 in (18.29 cm)
110UB1-336FT: 21.6 in (54.86 cm)

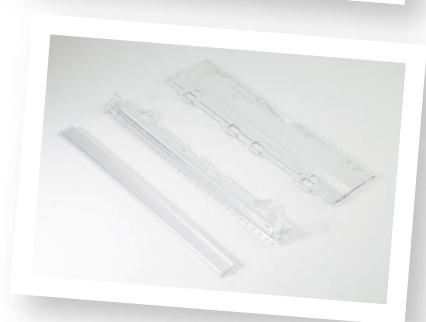
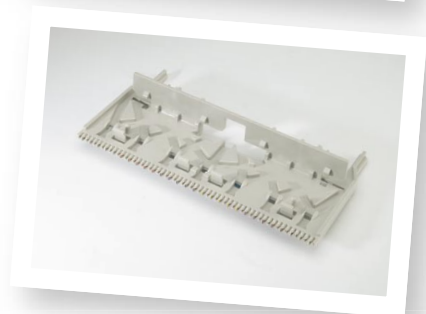
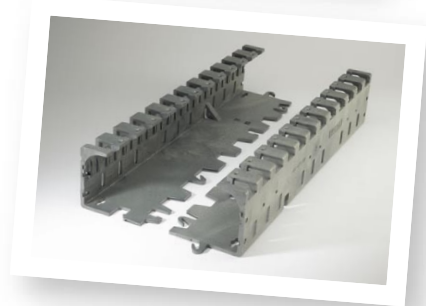
Width: 8.5 in (21.59 cm)

Depth: 7.5 in (19.05 cm)

Pairs per row: 28

Pairs per back panel: 110UB1-112FT: 112
110UB1-336FT: 336

Patch cords per row: 7 (4-pair cords)



Product Number	Detailed Description	Contents	Qty	Material ID
110UB1-112FT	VisiPatch System, 112-pair			108836792
		100PR Base, Back Panel Half	2	
		110UW-28, Wiring Block	4	
		110UC-28, Designation Covers	4	
		110C4W, Connecting Block	30	
		110UPHLDR, Label Holder	4	
		110WG3-2688L, White Label	12	
		Instruction Sheet	1	
110UB1-336FT	VisiPatch System, 336-pair			108561143
		300PR Base, Back Panel Half	2	
		110UW-28, Wiring Block	12	
		110UC-28, Designation Covers	12	
		110C4W, Connecting Block	84	
		110UPHLDR, Label Holder	12	
		110WG3-2688L, White Label	12	
		Instruction Sheet	1	
110U2R	Distribution Ring			108523937
110UTC	Trough Cover			108593203
110U19M	Bracket			108634429
110UHD-S8	Horizontal Duct			108637737
110UP-WB	Wall Mount Bracket			108688946
110UHS20	Installation Spacer			108637612
110UHPT-Uni. Horz. Trough	Universal Horizontal Trough			108836834
110UPT-Kit-Trough	Trough, U Channel to mount below VisiPatch components on wall			700012990
110UGND	Ground Bar			108561135
110UHWS	Spacer Duct			700032766
110YG3-2688L	Yellow Label			108528407
110WG3-2688L	White Label			108528415
110SG3-2688L	Slate Label			108528423
110RG3-2688L	Red Label			108528431
110PG3-2688L	Purple Label			108528449
110GG3-2688L	Green Label			108528456
110CG3-2688L	Orange Label			108528597
110BG3-2688L	Blue Label			108528464
110KG3-2688L	Brown Label			108528472
HLDR-110FDLH	Label Holder, Clear Plastic Cover			108738113
110C4W	Connecting Block			108538612



VisiPatch

VisiPatch™ Patch Cords



The VisiPatch Patch Cords utilize a patented connector design that allows the cordage to be neatly routed back toward the VisiPatch panel rather than to project forward. The connector snaps on with an audible click and features an anti-snag device, which allows the cord to be easily removed from the panel. The 1-, 2-, and 4-pair patch cords provide complete flexibility for all circuit types to accommodate IP, ISDN, digital voice, analog/voice/fax/modem applications. The 2- and 4-pair cords support GigaSPEED XL performance for higher bandwidth data applications. The 1-pair cord supports voice, fax and modem applications. The 119 cords use the VisiPatch connector design terminated to a GigaSPEED RJ45 connector.

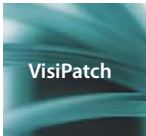
Patch cords are orderable using a 14-character feature configuration coding scheme which replaces the familiar 9-character Material ID. This allows maximum flexibility for ordering many different combinations of plug ends, cordage types, colors and lengths. Please use SYSTIMAX Copper Patch Cord Product Identifier (in Copper Reference Section) for ordering information or contact your SYSTIMAX BusinessPartner.

Physical Specifications:

- Contact Material:** Phosphor Bronze
- Contact Plating:** Gold 2 to 5 micro-inch (0.051 to 0.128 microns)
Nickel 75 micro-inch (1.91 microns)
- Insertion Life:** 200 minimum
- Plug Material:** Polycarbonate Blend UL-rated 94 V-0
- Operating Temperature:** 14°F to 140°F (-10°C to 60°C)

Electrical Specifications:

- TIA/EIA:** Category 6
- UL and cUL:** CM (cordage)



Product Number	Detailed Description	CPC Code
110VP2	VisiPatch to VisiPatch 1-Pair Cord	CPC5562
110VP4	VisiPatch to VisiPatch 2-Pair Cord	CPC5552
110VP8-GS3-B	VisiPatch to VisiPatch 4-Pair B Wired Cord	CPC5512
119VP8-GS3-B	VisiPatch to RJ45 4-Pair B Wired Cord	CPC5312

