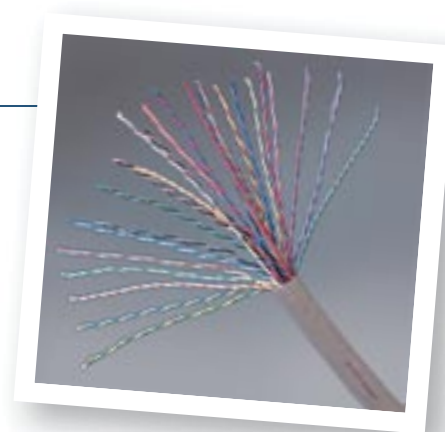


25-Pair Category 5 UTP, 61 Series Cable



Non Plenum 1061

The 25-pair 1061 cable is composed of 24 AWG bare solid copper conductors insulated with high density polyolefin. The insulated conductors are tightly twisted into pairs, stranded into mini-units and jacketed with a SYSTIMAX SCS specially formulated PVC jacket. User-friendly standard 25-pair PIC color coding minimizes confusion when terminating on SYSTIMAX SCS distribution hardware and Category 5, 25-pair, telco-type, 525 connectors.

Physical Specifications:

Weight: 110 lbs/1,000 ft (164 kg/km)
Nominal Jacket Thickness: 0.027 in (0.69 mm)
Nominal Outside Diameter: 0.495 in (12.32 mm)
Maximum Pulling Tension: 25 lbs (11.34 kg)
Operating Temperature: -4°F to 140°F (-20°C to 60°C)
Outside Diameter: 0.520 in (13.2 mm)
Gauge: 24 AWG

Electrical Specifications:

NVP (fastest pair @ 10 MHz): 70%
Maximum DC Resistance: 9.38 Ohms/100 m
Maximum DC Resistance Unbalance: 5%
Maximum Mutual Capacitance at 1 kHz: 14 nF/100 m
Standards: TIA/EIA 568A Category 5
UL and cUL: CMR

Product Number	Pair Count	Color	Length	Package	Material ID
1061 025CSL 25/24 R1000	25	Slate	1,000 ft (305 m)	Reel	107287484
1061 025CSL 25/24 R4000	25	Slate	4,000 ft (1219 m)	Reel	107479313
1060 025ASL 25/24 R1000	25	Slate	1,000 ft (305 m)	Reel	108339110

Plenum 2061

The 25-pair 2061A cable is UL verified Category 5 and UL listed type CMP for use in air return handling spaces. The cable has a user-friendly standard 25-pair PIC color coding scheme, which minimizes confusion when terminating on SYSTIMAX SCS distribution hardware and the Category 5, 25-pair telco-type 525 Connector. The cable conductors are insulated with Fluorinated-Ethylene-Propylene (FEP), twisted into pairs, stranded into mini-units and jacketed with Plenum rated material.

Physical Specifications:

Weight: 110 lbs/1,000 ft (164 kg/km)
Nominal Jacket Thickness: 0.013 in (0.33 mm)
Nominal Outside Diameter: 0.420 in (10.67 mm)
Maximum Pulling Tension: 25 lbs (11.34 kg)
Operating Temperature: -4°F to 140°F (-20°C to 60°C)
Gauge: 24 AWG

Electrical Specifications:

NVP (fastest pair @ 10 MHz): 75%
Maximum DC Resistance: 9.38 Ohms/100 m
Maximum DC Resistance Unbalance: 5%
Maximum Mutual Capacitance at 1 kHz: 4.6 nF/100 m
Standards: TIA/EIA 568A Category 5
UL and cUL: CMP

Product Number	Pair Count	Color	Length	Package	Material ID
2061 025ABL 25/24 R1000	25	Blue	1,000 ft (305 m)	Reel	107871477
2061 025AWH 25/24 R1000	25	White	1,000 ft (305 m)	Reel	107369845
2061 025AWH 25/24 R4000	25	White	4,000 ft (1219 m)	Reel	107995011

