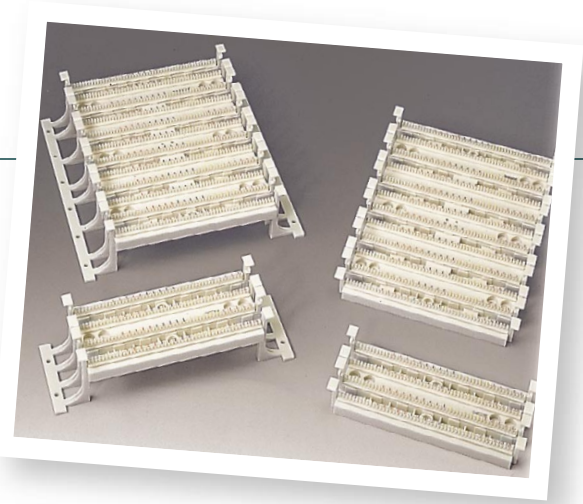


110 Wiring Blocks



The 110 Wiring Block is used to terminate cable pairs and permits a neat, organized arrangement of cables behind the block.

It is a flame retardant molded plastic block with horizontal strips, each of which secures and organizes 25 cable pairs. The index strips are marked with five tip colors to help the installer locate pairs quickly.

The blocks accommodate 22 through 26 AWG conductors and can be mounted directly on wall surfaces without backboards.

There are two types of 110 Wiring Blocks: "A" wiring blocks and "D" wiring blocks. The 110A Wiring Block is equipped with legs to provide space behind the block; also, the space on the sides can be used as a vertical jumper trough. The 110D Wiring Block is built without legs and is used where depth is restrictive. These blocks are used in conjunction with the 110C Connecting Blocks, which are ordered separately.

The 110RA 12/38 Rivet Kits may be used to secure the 110 blocks without legs on to the 110 Patch Panel System backboards.

The 88A2 is a molded plastic clip-on part that attaches to the legs of the 110AW2 wiring block.

Physical Specifications:

Height: 25/50-Pair: 1.75 in (4.45 cm)
100-Pair: 3.59 in (9.12 cm)
300-Pair: 10.79 in (27.41 cm)

Width: "A" block, 10.72 in (27.23 cm); "D" block, 8.5 in (21.6 cm)

Depth: "A" block, 3.25 in (8.25 cm); "D" block, 1.4 in (3.6 cm)

Electrical Specifications:

UL and cUL Listed

110 Wiring Blocks (Without 110C Connecting Blocks)

Product Number	Pair Count	Block Type	Material ID
110AW2-100	100	A	107059891
110AW2-300	300	A	107059917
110DW1-25	25	D	107256653
110DW1-50	50	D	107256661
110DW2-100	100	D	107059909
110DW2-300	300	D	107059925

110 Field Terminated Cross-Connect System Terminal Blocks

Product Number	Pair Count	Block Type	Material ID
110AA2-100FT	100	A	107058901
110AB2-100FT	100	A	107058919
110AC2-100FT	100	A	107058927
110AA2-300FT	300	A	107058935
110AB2-300FT	300	A	107058943
110AC2-300FT	300	A	107058950

Rivet Kits

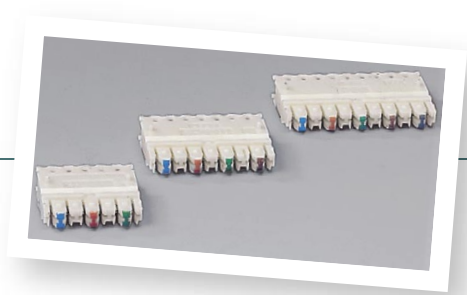
Product Number	Count	Block Type	Material ID
110RA-12 KIT	12	A	107611626
110RA-38 KIT	38	A	107611634

Retainer

Product Number	Detailed Description	Material ID
88A2	Retainer (Retains cross-connect wires and clips onto 110AW2 blocks)	107267452

Additional
Copper
Connectivity

110C Connecting Blocks



The 3-Pair (110C-3), 4-Pair (110C-4) and 5-Pair (110C-5) Connecting Blocks consist of a 1-piece, flame retardant, molded plastic housing containing solder-plated quick clips that cut through the insulation on 22 through 26 AWG conductors as they are seated onto the wiring block.

The front of the connecting block is color-coded, allowing rapid pair identification and termination. The connecting blocks seat on the 110 Wiring Block and provide an electrically gas tight connection between cable conductors terminated on the wiring block and Cross-connect Wire or 110 Patch Cords.

Physical Specifications:

Height: 0.25 in (0.64 cm)
Width: 3-Pair: 0.9 in (2.3 cm)
 4-Pair: 1.2 in (3.05 cm)
 5-Pair: 1.5 in (3.8 cm)
Depth: 0.93 in (2.36 cm)

Product Number	Pair Count	Qty/Pkg	Material ID
110C-3	3	10	103801239
110C-4	4	10	103801247
110C-5	5	10	103801254

110 Labels and Holders

The 110 Label assembly consists of a clear label holder (188UT1-50) and colored label inserts (available in green, purple, yellow, blue, gray, brown, white and orange).

The insert labels contain vertical lines spaced on the basis of circuit size (3-, 4-, 5 pair).

The transparent label holder snaps onto the wiring block to clearly identify wiring functions, provide circuit information and conceal and protect the cable conductor terminations.

The labels will not interfere with placing, tracing or removing jumper wires.



Additional
Copper
Connectivity

Product Number	Detailed Description	Color	Pair Count	Qty/Pkg	Material ID
188UT1-50	Label Holder	Transparent		6	103895504
110YB2-4500L	Label	Yellow	4	90	106657232
110YA2-4500L	Label	Yellow	5	90	106657158
110WB2-4500L	Label	White	4	90	106657216
110WA2-4500L	Label	White	5	90	106657133
110SA2-4500L	Label	Gray	5	90	106657166
110PB2-4500L	Label	Purple	4	90	106657190
110PA2-4500L	Label	Purple	5	90	106657117
110GB2-4500L	Label	Green	4	90	106657182
110GA2-4500L	Label	Green	5	90	106657109
110BB2-4500L	Label	Blue	4	90	106657174
110BA2-4500L	Label	Blue	5	90	106657091
188BB1-100	Designation Strips	Blue		2	102579810
188BG1-100	Designation Strips	Blue		1	103103701